

How to Configure Java To Run WeavePro In any Browser

01. Download and Install Java 8 Update 131 from www.skumars.co/download page

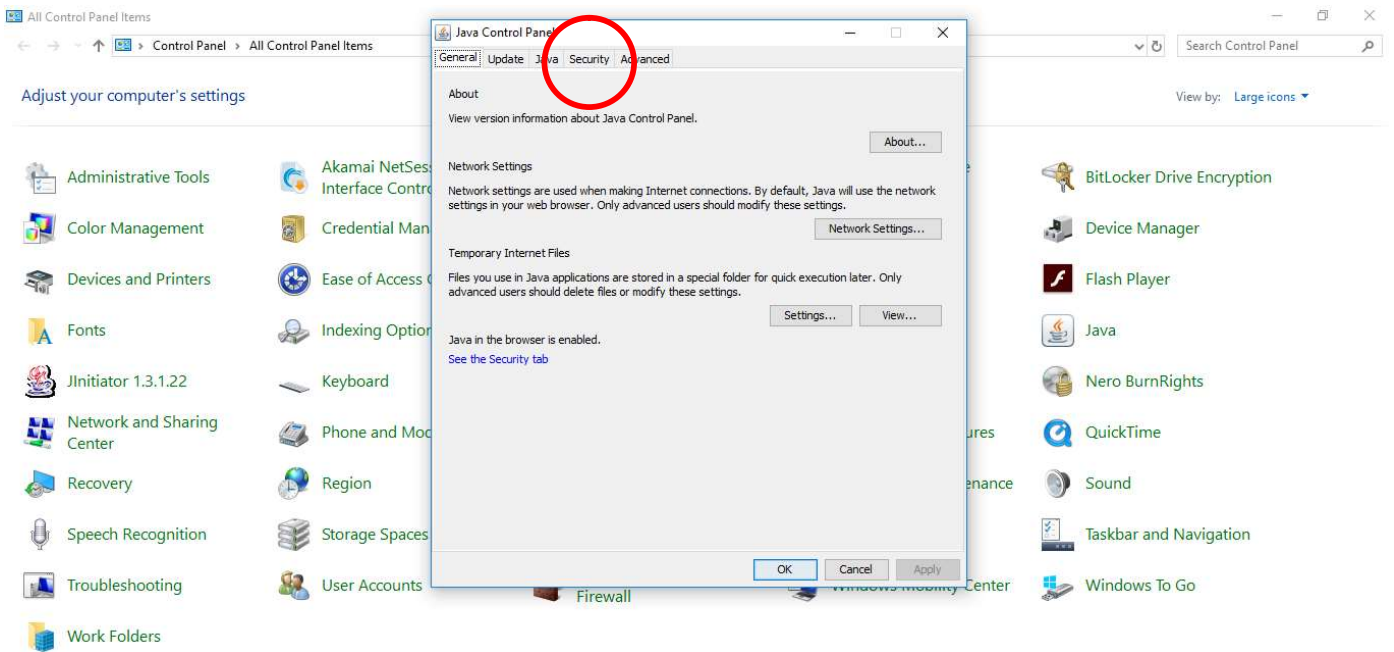
The screenshot shows a web browser window displaying the 'Downloads' page of S. Kumars. The page lists three items for download: '1. Weavepro User Guide', '2. Java 8 Update -131', and '3. Corporate Broucher'. The 'Java 8 Update -131' item has a red 'DOWNLOAD' button next to it. Below the browser window, the Windows taskbar is visible, showing the search bar and various application icons. The system tray in the bottom right corner shows the time as 11:50 AM on 22-Aug-18.

02. After download , install Java and follow the instruction below to open weavepro ERP from any browser.

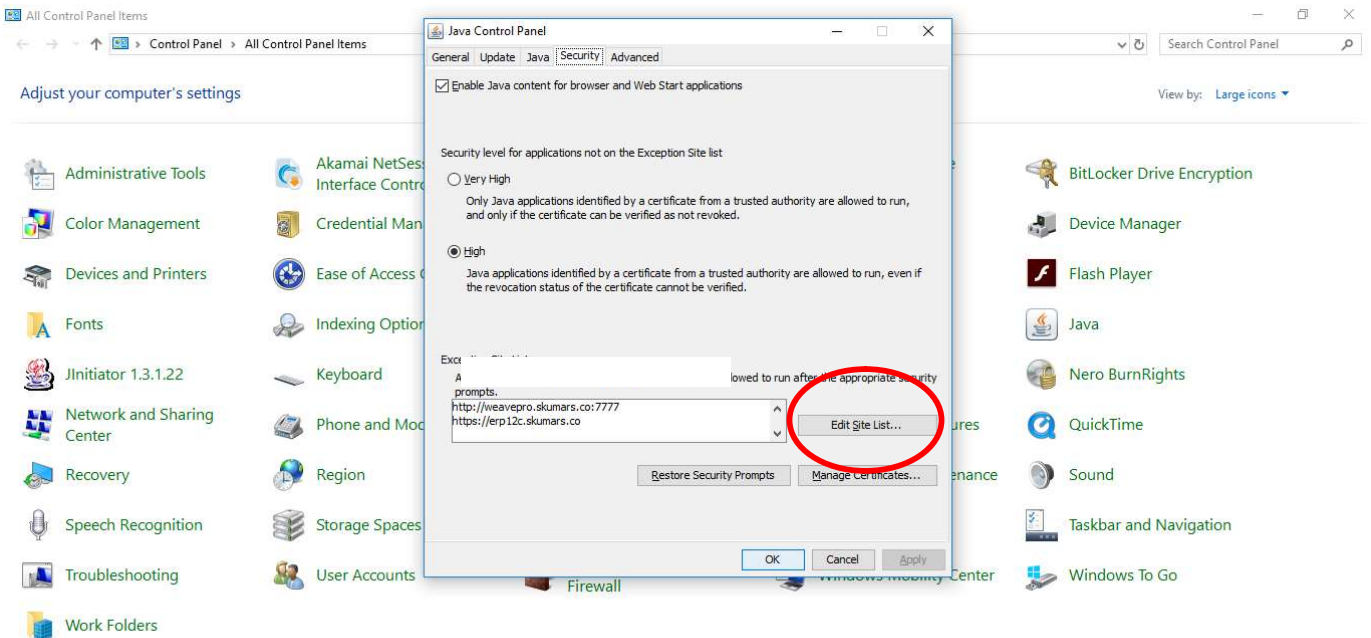
03. Open Control Panel

The screenshot shows the Windows Control Panel window titled 'All Control Panel Items'. The window displays a grid of various system settings and tools. The 'Java' icon, which features a coffee cup, is circled in red. Other visible icons include Administrative Tools, Color Management, Devices and Printers, Fonts, Jinitiator 1.3.1.22, Network and Sharing Center, Recovery, Speech Recognition, Troubleshooting, Work Folders, Akamai NetSession Interface Control P..., Credential Manager, Ease of Access Center, Indexing Options, Keyboard, Phone and Modem, Region, Storage Spaces, and User Accounts. The 'View by' dropdown is set to 'Large icons'.

04. Open Java Control Panel – [Click on Java Option – See above Image]



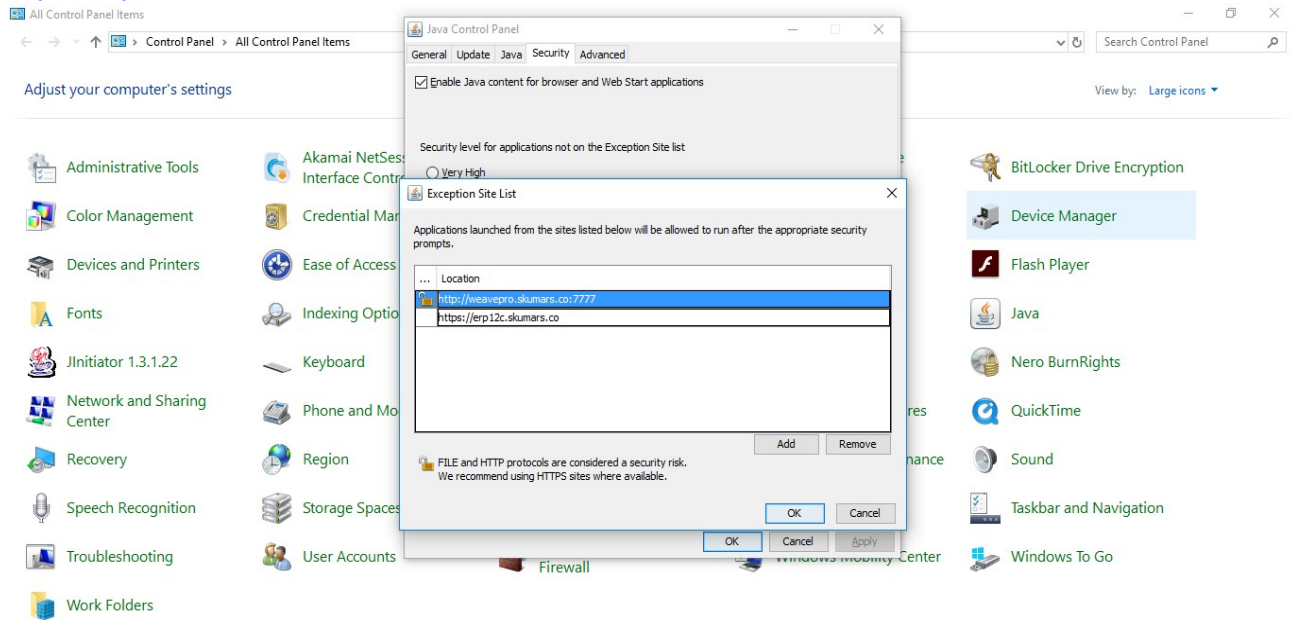
05. Now In Java Control Panel Goto Security Tab and click on Edit Site List



06. Now Add Exception (as shown in below window)

<http://weavepro.skumars.co:7777>

<https://erp12c.skumars.co>



07. Now Click On Ok Then Again Click on Ok , now close control Panel and check the weavepro ERP in any browser by using below link

erp12c.skumars.co